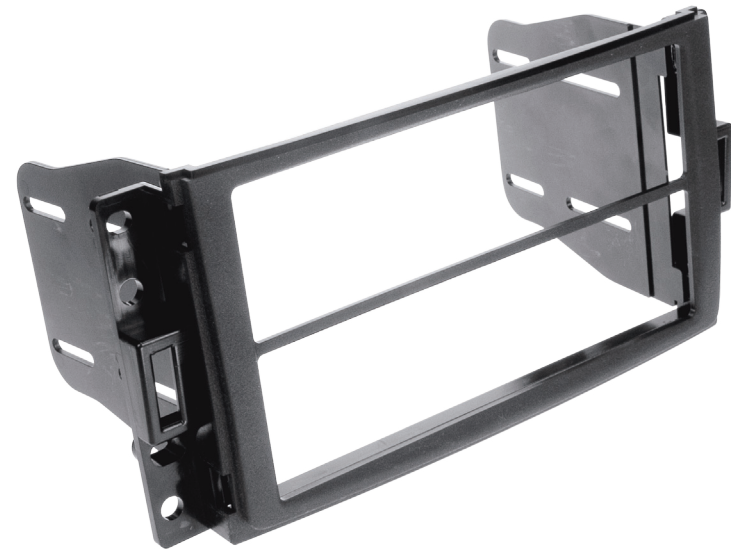




Installation Manual
Double DIN Kit
Part-No.: 381238-04

- **Chevrolet Corvette 2005-2008**
- **Chevrolet Uplander 2005-2008**

Compatible with double DIN devices



DOUBLE DIN MOUNT INSTALLATION INSTRUCTIONS

1. Remove center rib shown in Fig. B for double DIN radios only.
2. Attach left and right mounting brackets to the kit as shown in Figure C.
3. Insert ISO mountable radio between ISO mount brackets and loosely attach to sides of radio using screws provided with radio when possible or screws supplied with kit.
4. Slide radio forward or backward for desired look and tighten screws.
5. Support the rear of the radio component(s) with back strap (not included).

